

Welcome

Key dates and deadlines for the LSA

Final marks should be entered on Portico by 14 June to be released to students on 8 July

Exam Board Support page now updated with Statistical Analysis guidance

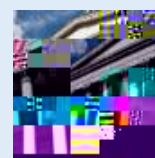
Completing Research

- 28 June 9 July** - Final deadline for any changes to Assessment Patterns 2021/22 to be approved by the Faculty
- 1 July** - Central LSA Timetable Data Extraction from Portico
- 7 12 July** - Departments review draft LSA timetable
- 8 July** - UG Results Day - Results, awards, interim results and progression will be emailed and available on Portico
- 8 July** - PG Results Day - Term 1 or Term 2 completed module results will be emailed and available on Portico
- 19 July** - LSA exam paper deadline
- 19 July** - Late Summer Assessments 2021 Timetable publication
- 31 July** - Module catalogue refresh
- 16 August 3 September** - Late Summer Assessments 2021
- 6 September** - All new pre-enrolled students and all continuing students will be invited to select their modules
- 17 September** - LSA mark entry and exchange deadline
- 20 24 September** - LSA Sub Boards

Resources and Guidance

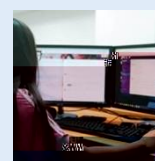
Exam Board Support

Key information and training materials for the new Exam Board processes



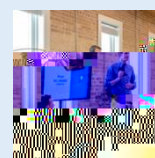
Mark Entry Quick Guides

New Quick Guides available to assist with many mark entry topics



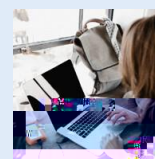
External Examining Webpage FAQs, Tasks timeline, Key Contacts

Refer to the External Examining Webpage for FAQs, Moodle access, Timeline of Tasks and Key Contact details and News items



Interruptions of Study - Resource for Staff

Staff Guidance, slides and recordings from recent briefing sessions for the new Interruptions of Study process



In case you missed it

Degree Documentation